



ALPHA EAGLES

better living standards for everybody

HOME OF HOPE OBSERVATIONS AND PROPOSED SOLUTIONS

FOR IMPROVING LIVNG CONDITIONS



FOLLOW US ON FACEBOOK @ :
a_e_architecturals

FOLLOW US ON FACEBOOK @ :
AEarchitecturals

+264 81 829 2992
+264 81 826 0090

P.O.Box 1104 WHK
alphaeaglestcc@gmail.

Erf 629, Auros street,
Cimbebasia - WHK

1. INTRODUCTION.



Home of Good Hope – New Building (new site)
Location: Windhoek, Goreangab, Monica street (22°31'25.2"S 17°01'31.7") Plot No: R/87
Client: Home of Good Hope (Mrs. Monica. I).

Home of Good Hope is a local orphanage/foundation that has been from 2007 to date been operating from tin shacks on leased land, (but has recently acquired a piece of land from the City of Windhoek Municipality)- shown in the map. Started with a soup kitchen for 40 children at risk in Goreangab informal settlement area, which now has grown and currently provides nutrition, health, pre-school, after school care and homework support services to 1200+ at-risk children, as well as healthcare and nutritional support to their indigent parents. Learners are supported to attend and remain in school with uniforms, shoes and school supplies. Qualified children are supported to attend tertiary institutions and university.

Home of Good Hope is currently faced with several challenges, and to address these, we have decided to provide a sustainable solution through infrastructure development. Our support will focus on constructing facilities at their new site in Goreangab, which will help meet their needs and enable them to continue their valuable work. Because of the dedication, organization, and continuous growth demonstrated at Home of Good Hope, the A-E (Alpha Eagles) team has chosen this orphanage for assistance.

1. INTRODCUTION.

Home of Hope, founded by Ms. Monica, is a sanctuary for over a thousand vulnerable children in the Gorekhab area of Windhoek, Khomas Region, Namibia. The orphanage provides daily meals and basic kindergarten education, giving these children a chance to grow in safety, care, and dignity. Despite its efforts, Home of Hope continues to face major challenges. The orphanage operates on rented land, paying approximately N\$2,000 monthly – funds that could otherwise go toward the children’s welfare. The property itself is unsuitable because of:

1.1 Inadequate Infrastructure: The orphanage currently operates under severely inadequate conditions that pose significant risks to the health, safety, and overall well-being of the children. The environment is dusty and lacking in the most basic infrastructure. There is no proper kitchen to ensure the hygienic preparation of meals, no adequately equipped classrooms to support effective learning, and no proper dining areas to allow the children to eat in comfort and dignity. The venue only has one ablution/toilet facility which is used by all the children and volunteers, resulting in poor sanitation standards.

1.2 Unhygienic and Hazardous Surroundings: One of the most alarming issues is the open flow of human waste in front of the orphanage premises. This situation has created an unbearable stench and poses a direct threat to the health of the children and staff. The presence of such unhygienic conditions significantly increases the risk of disease outbreaks, including cholera, typhoid, and respiratory infections. The children are continuously exposed to these environmental hazards, which can have long-term detrimental effects on their physical and psychological development.

1.3 Impact on Children’s Well-being and Development: The current environment is not conducive to the safe, nurturing, and healthy upbringing that every child deserves. Children in the orphanage are already vulnerable due to the loss or absence of parental care, and the lack of proper infrastructure further compounds their challenges. The inability to access clean sanitation, structured education, nutritious meals, and a secure living environment deprives them of their basic rights and opportunities for growth.

1.4 Cold & Heat: The thin iron sheets conduct heat and cold, exacerbating discomfort during extreme weather conditions. In Namibia (Windhoek), temperatures can plummet to lows of -11°C / 12.2°F, posing significant health risks to the children. Conversely, during the scorching summer months, temperatures can soar to highs 46°C / 115°F, rendering the facility unbearable.

1.5. Absence of electricity on the rented facility: In the absence of electricity, the facility faces severe operational challenges. Basic needs such as lighting, heating, and cooling become impossible to meet. Educational activities are hindered due to the inability of the children to study at night, charging electronic devices is imposible. The lack of electricity also affects cooking, safety and security, especially during the darker winter months, making the environment unsafe for children and staff alike. Furthermore, the absence of power severely limits the ability to store perishable food items, compromising nutrition and hygiene standards for the children.

1. INTRODCUTION... cont

1.6. Kitchen work being done outside

- COOKING DONE OUTSIDE
- NO ZINKS FOR CLEANIND
DISHES



PICTURE

A

PICTURE

B

1. INTRODCUTION... cont

1.7.Improper dinning area



1. INTRODCUTION... cont

1.8. Classrooms

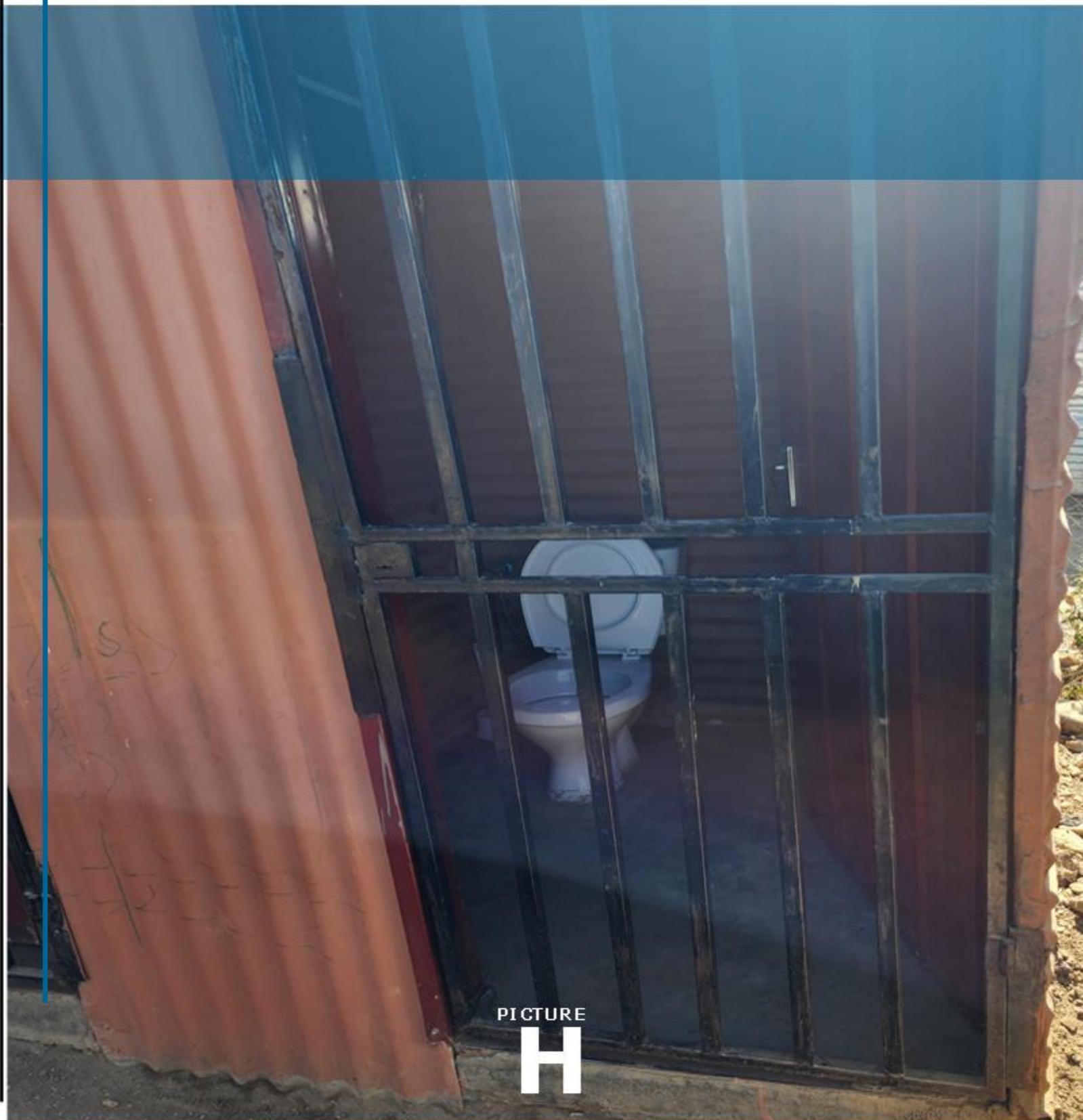
- FACILITY ONLY HAS PROVISION FOR TWO CLASSROOMS



1. INTRODCUTION... cont

1.9.Ablution/Toilets

- THE FACILITY ONLY HAS ONE (1) TOILET FOR THE CHILDREN AND STAFF



PICTURE

H



PICTURE

I

1. INTRODCUTION... cont (Sleeping conditions)

1.10. The open flow of human waste in front of the orphanage premises



- MAKES THE PLACE SMELL
- PROMOTES THE BREEDING OF FLYS
- CHILDREN STEP IN THE WASTE THIS MIGHT CAUSE INFECTIONS

PICTURE
J



PICTURE
K

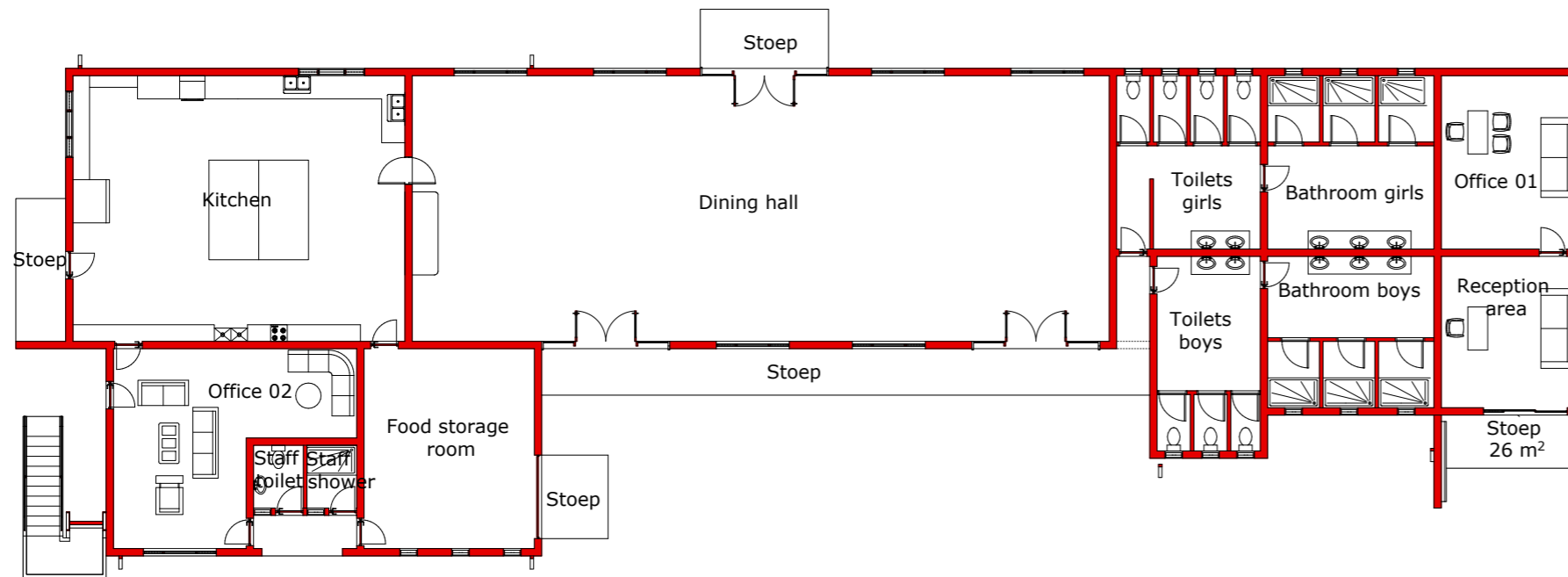
2. PROPOSED SOLUTION

Recently, Home of Hope reached a significant milestone by acquiring a new piece of land, officially titled to the orphanage by the City of Windhoek Municipality. This presents a transformative opportunity to build a permanent, child-friendly facility tailored to their needs. The proposed infrastructure plan includes:

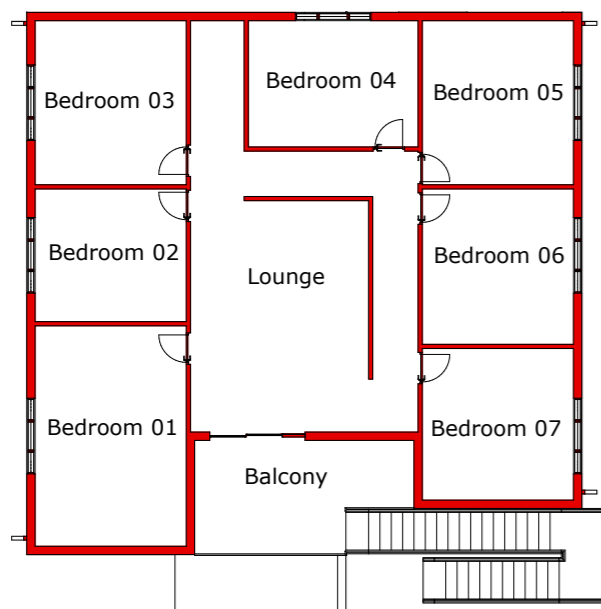
1. A fully equipped kitchen with gas stoves, a food storeroom, and another storeroom for supplies and essential items
2. A dining hall designed to double as sectioned classrooms.
3. A reception area with an administrative office for coordination and management.
4. Modern ablution facilities with showers, ensuring hygiene and comfort.
5. A staff living and relaxation room to support the caretakers.
6. Sleeping rooms for children who require overnight care.
7. Landscaping with interlocking surfaces to eliminate dust and provide safe, clean surroundings, plus a playground for recreation.
8. A perimeter fence with access-controlled gates to ensure safety, manage entry, and protect the children.

This comprehensive design, is aesthetically appealing and focused on safety, education, and well-being, is estimated to cost approximately N\$ 3,830,151.66. With the right support, Home of Hope can turn this vision into reality—creating a permanent sanctuary where children can learn, play, and grow in an environment that nurtures their health, safety, and future.

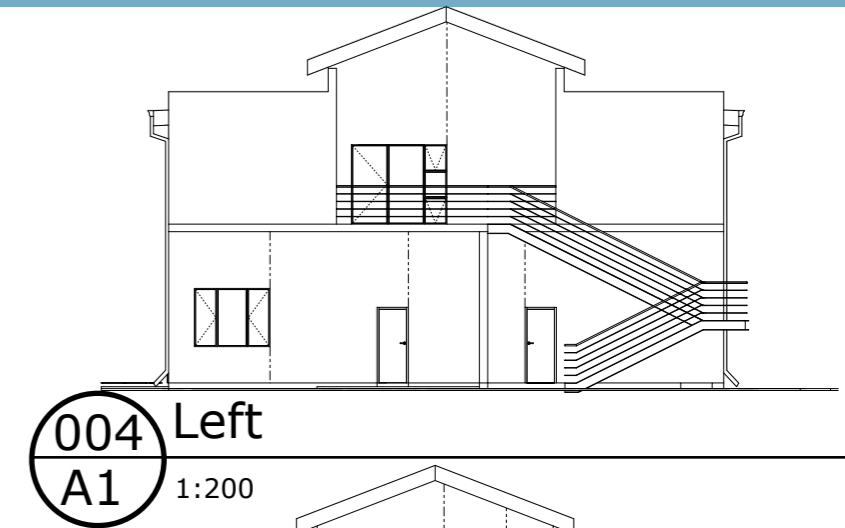
2. PROPOSED SOLUTION... cont (Floor plan & design elevations)



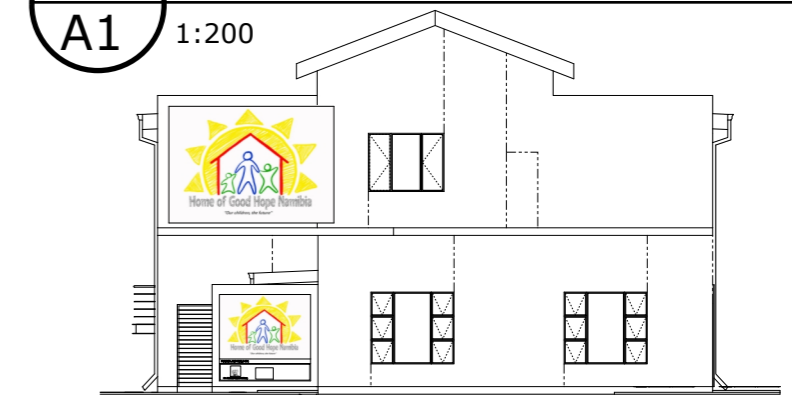
001 Ground Floor - Floor plan
A1 1:200



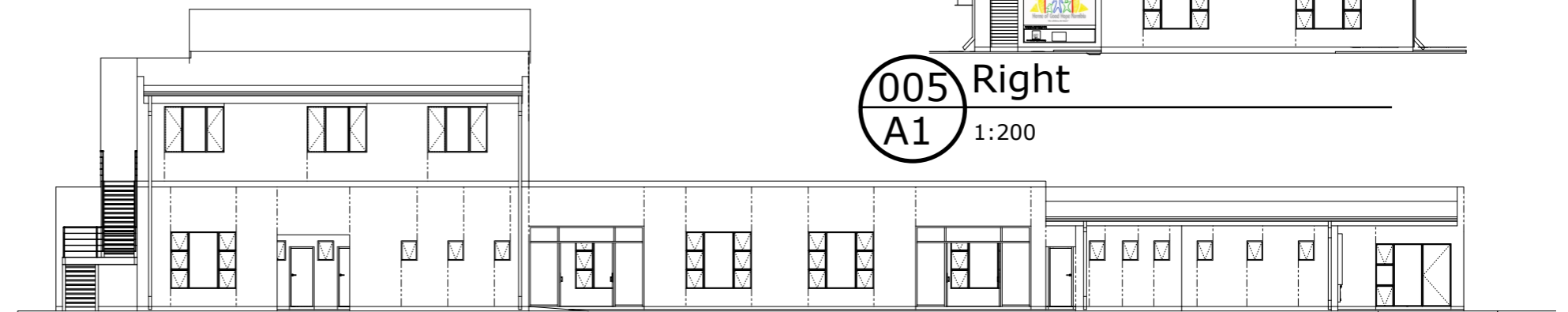
001 First Floor - Floor plan
A1 1:200



004 Left
A1 1:200



005 Right
A1 1:200



002 Front
A1 1:200



003 Back
A1 1:200

2. PROPOSED SOLUTION... cont (renders)



1.

2. PROPOSED SOLUTION... cont



2.

2. PROPOSED SOLUTION... cont



3.

2. PROPOSED SOLUTION... cont



4.

2. PROPOSED SOLUTION... cont

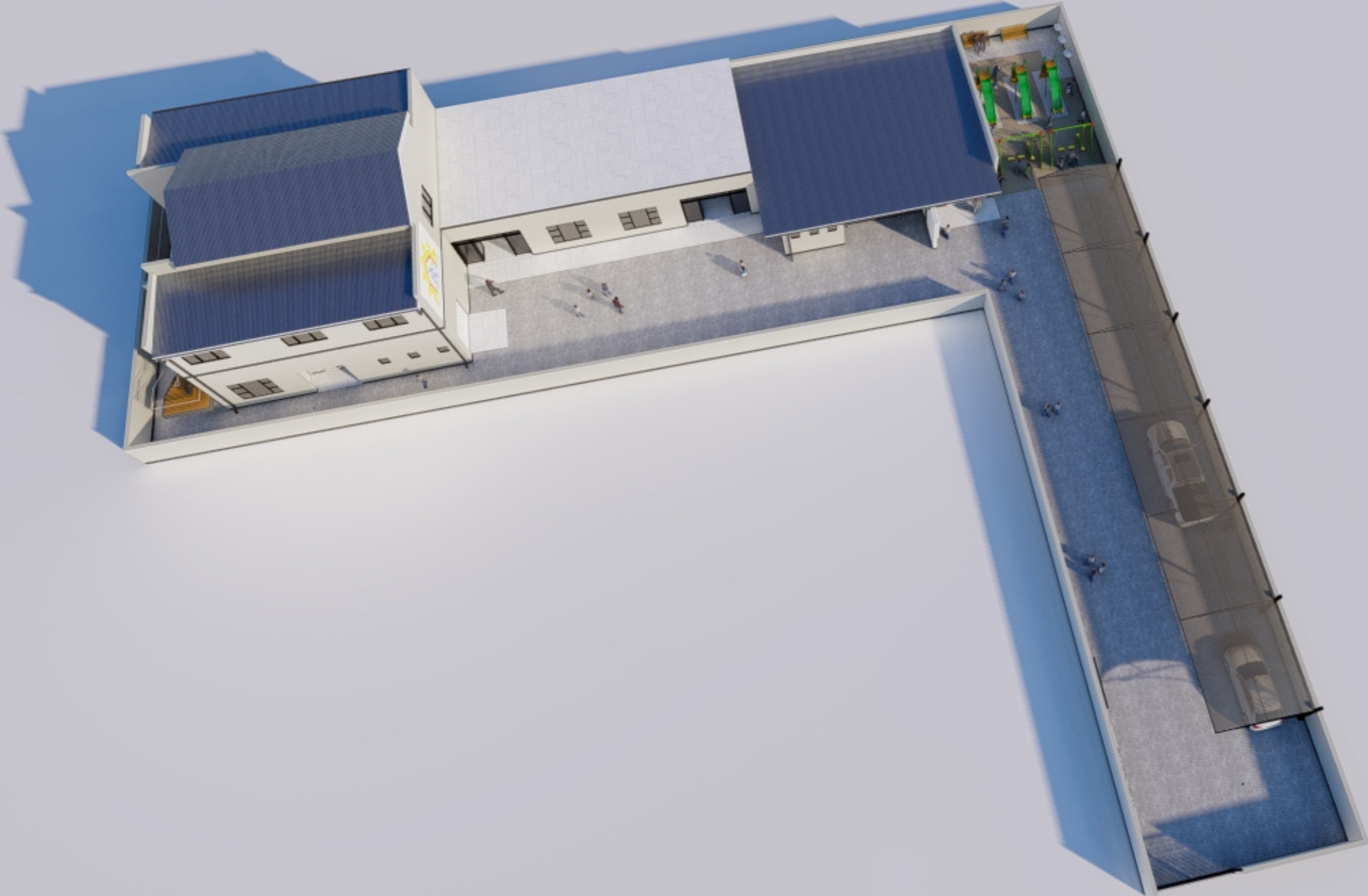


5.

2. PROPOSED SOLUTION... cont

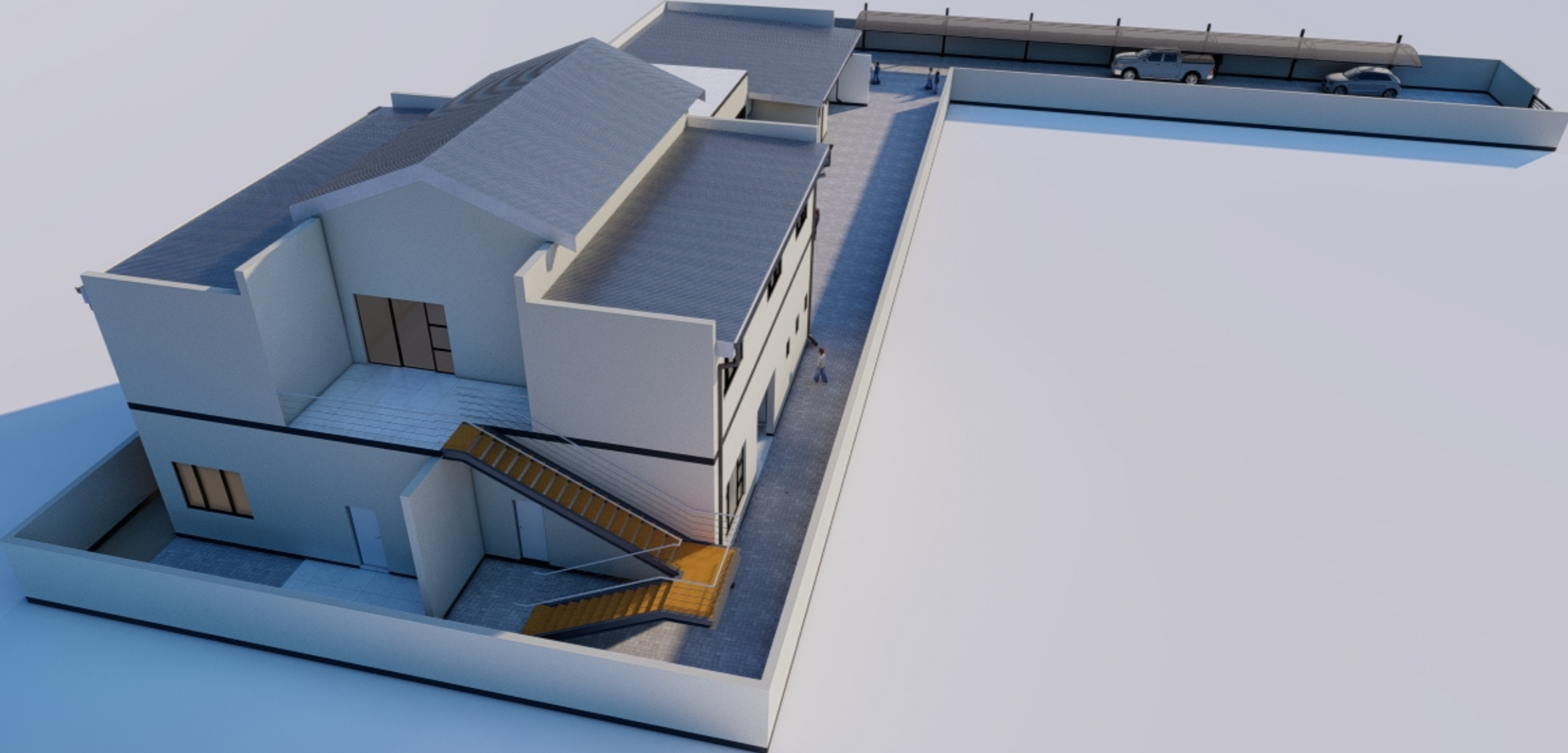


2. PROPOSED SOLUTION... cont



9.

2. PROPOSED SOLUTION... cont



10.

2. PROPOSED SOLUTION... cont



11.

3. ADITIONAL FEATURES (Optional)

Our solution is effective; however, with these additional features, it will provide exceptional benefits:

1. Solar powered Gysers :

This will reduce electricity costs and is preferable for its sustainability. These will keep individuals in the orphanage warm during cold weather.

2. Washing sinks (Wash-through):

Currently, there are no proper laundry areas in the orphanage, leading to water spills and inefficient water conservation. Therefore, installing washing sinks in a designated laundry area will significantly conserve water and improve hygiene.

3. SOLUTION COST

The solution started with architectural designs, with the associated fee totaling N\$ 54,000.00, covered by A-E.

However, to fully accomplish this solution, we must address additional expenses such as material costs, labor costs, logistics, and contingencies. This is where we seek the generous financial support and contribution of the Dr. Nicklaus Foundation.

3.1 Below is a table of the sum of these costs to raise the solution fully:

SOLUTION		TOTALISED COSTS		
		QTY	UNIT PRICE	TOTAL PRICE
1.	Construction of complete structure (inclusive of materials, labor, and engineering fees)	1	N\$ 3,408,230.76	N\$ 3,408,230.76
2.	Kitchen and dining hall equipments	—	N\$ 421,920.90	N\$ 421,920.90
TOTAL				N\$ 3,830,151.66

For a more detailed Bill of Quantities (BoQ), quotations, drawings, and any necessary documents required to proceed with this solution, please request them from us (A-E), and we will be more than happy to provide them. Collaboratively, we can achieve this goal of enhancing living standards of this beautiful kids.

This amount exclude contingency amounts/fees, which is rated at 7.5% min to 15% max of the total.

We eagerly await your response.

PROPOSAL END



ALPHA EAGLES

better living standards for everybody



FOLLOW US ON FACEBOOK @ :
a_e_architecturals

FOLLOW US ON FACEBOOK @ :
AEarchitecturals

+264 81 829 2992
+264 81 625 2057

P.O.Box 1104 WHK
alphaeaglestcc@gmail.

Erf 1340, Chobe street,
Cimbebasia - WHK